

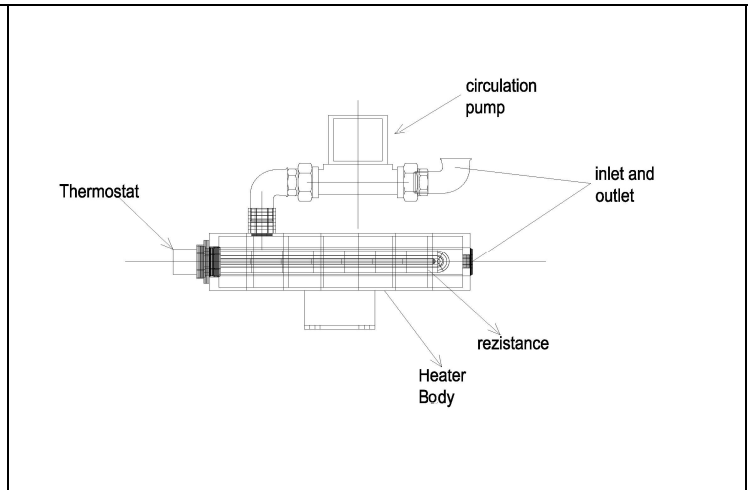
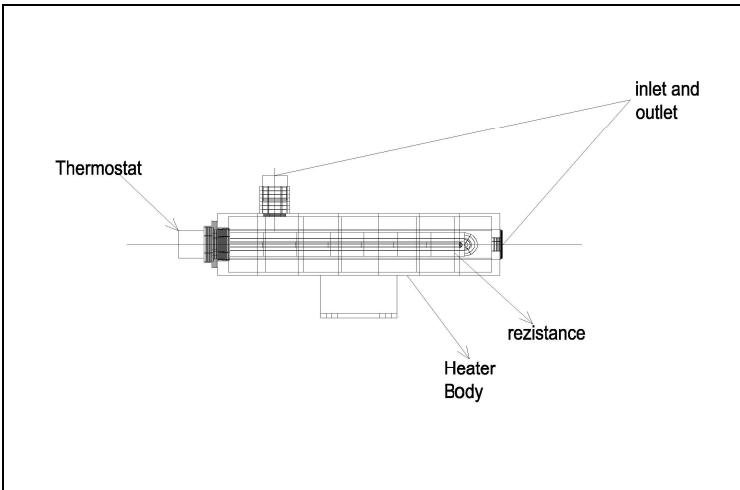
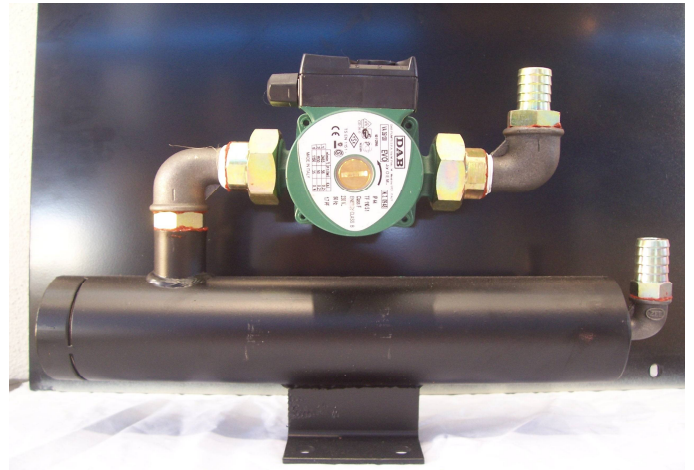
Monophase / Threephase Heater

All type of engine heaters maintain an engine's operating temperature during downtime and serve as an excellent cold weather or emergency starting aid while eliminating needless idling.

These systems are designed to heat and circulate coolant throughout the engine's cooling system to efficiently maintain an engine at optimum starting temperatures. Maintaining jacket water temperatures ensures easy starting, reduces harmful emissions at start-up and allows engines to go to full power without needless idling.

Options

- * Low coolant Alarm Switch.
- * Radial/axial mounting
- * Circulation Pump (standart for threephase heating system)
- * Power Control Contactor (standart with ATS system)
- * Double rezistence
- * Special valued heater Thermostat (standart 40C-80C)
- * Single phase models available 500W to 2000W
- * Three phase models available 2000W to 4000W



Heater Ref.	A	B	C
	Volts	°C	Watt
ITH M-1	220	40-80	2000
ITH T-1	400	40-80	4000